



# COFFEA ENJOY

## Sales Information



Summer 2022

---

COFFEA ENJOY

# STANDARD CONFIGURATION



|                            | COFFEA ENJOY - 522248       |
|----------------------------|-----------------------------|
| Daily Capacity             | 150 Cups / Day              |
| Topping                    | ✓                           |
| Fresh Milk                 | ✓                           |
| Milk System                | Basic-Milk (tbd)            |
| Brewer                     | 20 g stainless steel brewer |
| Number of Topping Hoppers  | 1, 1.200 g                  |
| Number of Beans Hoppers    | 1, 1.500 g                  |
| Permanent Water Connection | ✓                           |
| Water Tank                 | ✓                           |
| Grinder                    | Premium Ceramic Grinder     |
| Display                    | 10" Color Touch Display     |
| Optional Milk Cooler       | ✓                           |

COFFEA ENJOY

## PRODUCT DETAILS

- Compact & durable design for professional settings
- Highly efficient with 2x 0.7L boilers
- 20g brewer for up to 480ml (XL) beverages
- 2 hoppers for whole beans and chocolate or topping
- Perfectly tempered (65°C) and textured milk foam for consistently delicious milk coffee specialties
- Topping or fresh milk with optional 4L milk cooler for constantly cooled and hygienically stored milk
- Permanent water connection or 4L water tank
- Fully automatic cleaning
- Intuitive 10" touch screen for easy self service and possibility to customize with branding
- Plug & play for quick and easy installation
- Telemetry possible
- Compatible with payment systems



## COFFEA ENJOY

# TECHNICAL DATA

|                             |                    |
|-----------------------------|--------------------|
| Dimensions (HxWxD):         | 620 x 340 x 545 mm |
| Milk cooler (HxWxD):        | 365 x 240 x 450 mm |
| Weight:                     | 26,5 kg            |
| Height-adjustable cup tray: | 80 - 180 mm        |
| Brewing capacity:           | 20 g               |
| Power:                      | 230 V              |
| Power output:               | 2.900 W            |
| Sound level:                | < 70 dB            |
| Energy efficiency rating:   | <b>A+</b>          |

### Hopper Capacity

|         |                                 |
|---------|---------------------------------|
| Beans:  | 1 x 1.500 g                     |
| Powder: | 1 x 1.200 g (Topping/Chocolate) |

### Capacity

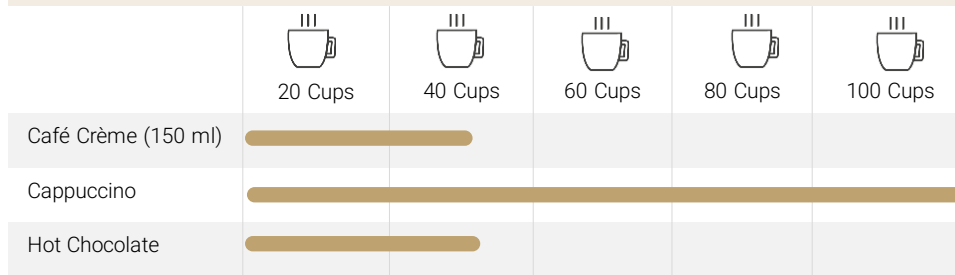
|              |            |
|--------------|------------|
| Drip tray:   | 1,5 liters |
| Water tank:  | 4 liters   |
| Milk cooler: | 4 liters   |



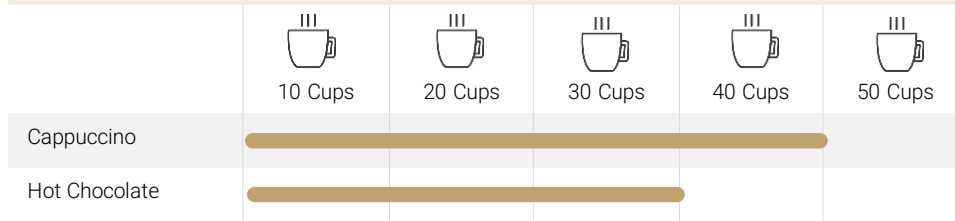
## COFFEA ENJOY

# HIGH TANK, COOLER AND HOPPER CAPACITIES REQUIRE LESS FREQUENT TOP-UPS

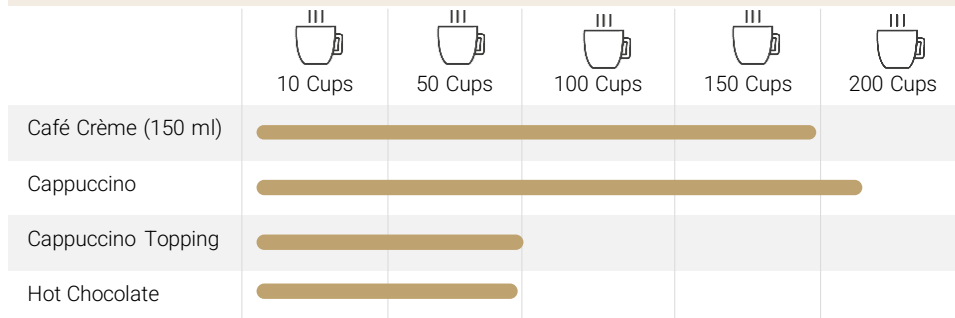
### REACH WATER TANK



### REACH MILK COOLER

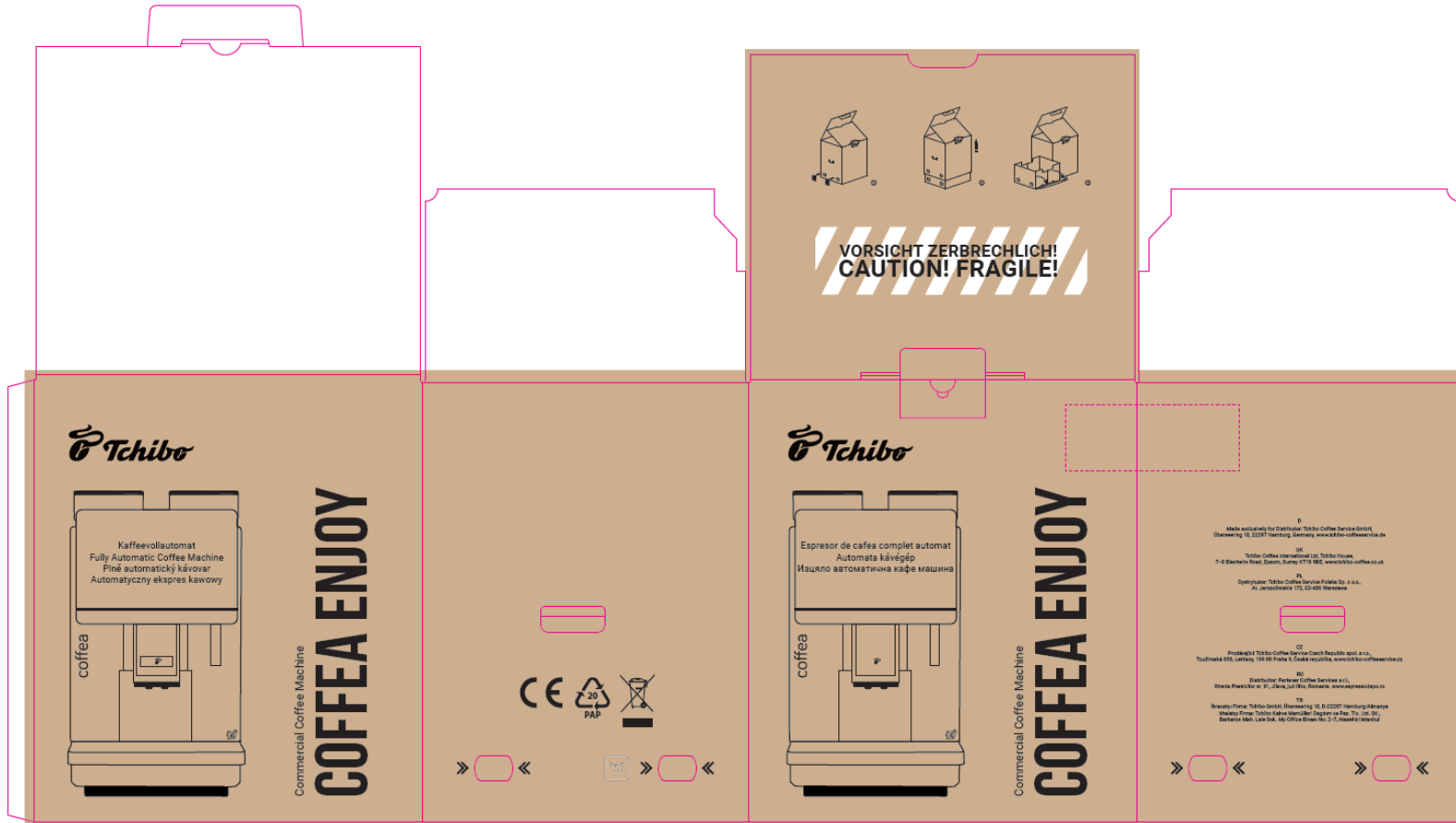


### REACH HOPPERS (BEANS / TOPPING)



# COFFEA ENJOY

## PACKAGING



COFFEA ENJOY

LABEL



*Tchibo*

Commercial Coffee Machine

**COFFEA ENJOY**

Tchibo Coffee Service GmbH  
Überseering 18, 22297 Hamburg, Germany

Artikelnummer: 522248  
Inhalt: 1 VE



COFFEA ENJOY

**ONE MACHINE FOR ALL COFFEES....**

